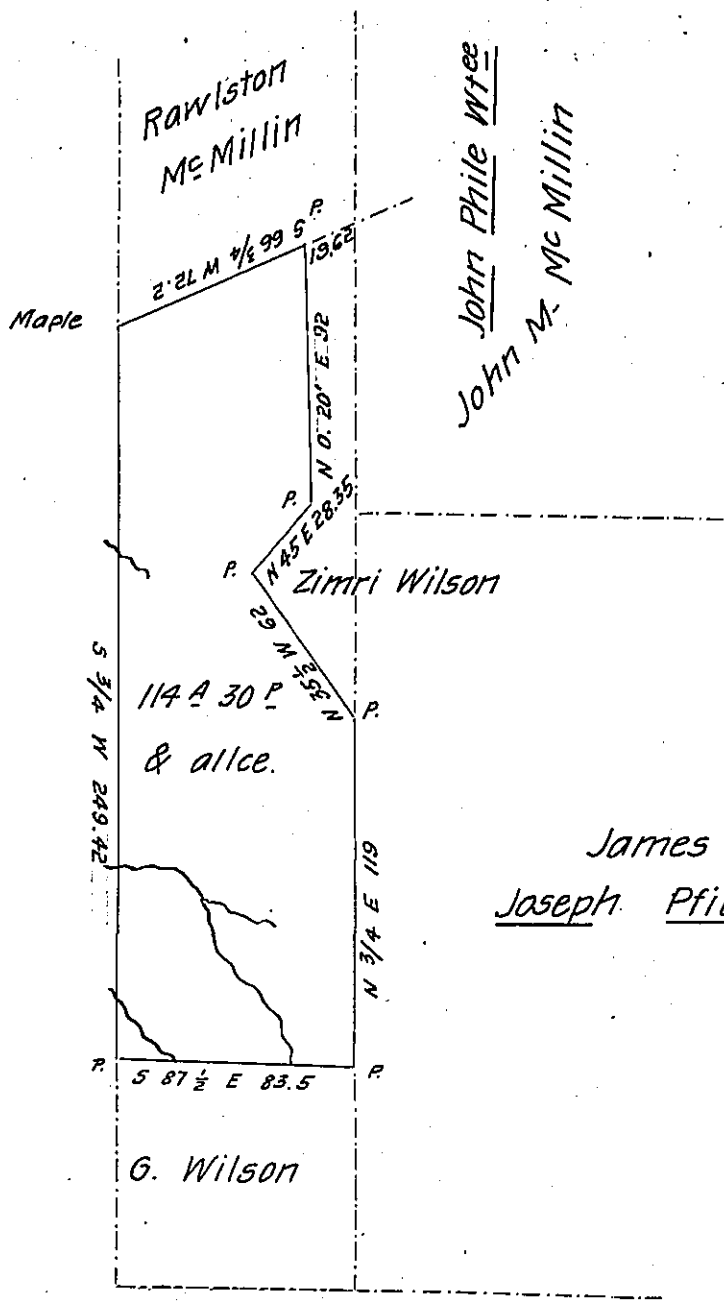


(See Page 163)

State Line



James Davidson  
Joseph Pfeiffer Wtee.

Draft of a Tract of Land Situated in South Beaver Township  
 in the County of Beaver containing 114 acres 30 perches & allowance of  
 six per ct. Surveyed for James Davidson Feb. 9<sup>th</sup> 1871 being a part of a  
 larger tract of land originally surveyed in pursuance of a warrant grant-  
 ed to James Reed dated April 14<sup>th</sup> 1792

Azariah Wynn C.S.

To Hon. J. M. Campbell  
 Surveyer General.

IN TESTIMONY that the above is a copy of the original remaining on file in  
 the Department of Internal Affairs of Pennsylvania, made  
 conformably to an Act of Assembly approved the 16th day of  
 February, 1833, I have hereunto set my Hand and caused  
 the Seal of said Department to be affixed at Harrisburg,  
 this.....second.....day of.....October.....1906

*Lacon R. Perry*  
 Secretary of Internal Affairs